



# WOOD WORKING

STILL USING TRADITIONAL FASTENING

# TECBOND HOTMELTS ARE STRONGER. FASTER.



Secure reinforcing cleats to drawer bottoms and wardrobe & cabinet backings



Fast and effective repair of knot defects, deep scratches and other forms of deep wood damage



V-groove assembly becomes instant



Make mirror to frame fastening quicker & easier



Build your templates quickly and easily



Bond decorative mouldings onto caskets



Assembling & sealing flat pack furniture cartons



Attach fringing to upholstery



Fasten corner blocks instantly with hot melts



All glues available in 12mm (1/2") & 15mm (5/8") sticks or 43mm (1 3/4") slugs except tecbond 267 (43mm only)



Formulation	Description	Colour	Open time	Viscosity
232	Economical, high viscosity, clear general purpose adhesive. Suitable for fabrics, wood, card, and some plastics	Clear & Glitter	Medium	High
23	Medium viscosity multi-purpose adhesive. For fabric, hard & soft wood & many plastics	Light brown	Long	Medium
248	Very high performance, acrylic based hotmelt. Excellent adhesion to smooth and shiny surfaces	Clear	Long	Medium
261	High performance, tough, flexible adhesive with long open time. For use with ceramics, plastics incl PP/PE & woods	Light brown	Long	Low
341	Medium viscosity, fast setting, white adhesive with instant grab, suitable for packaging and woodworking applications	White	Short	Medium
267	High & low heat resistant, medium open time, product assembly adhesive for polypropylene, wood & metals	Light brown	Long	Low

METHODS LIKE COLD GLUE, TAPE & STAPLES?

CLEANER. MORE EFFICIENT. LESS DESTRUCTIVE.



tec805-12

Low cost medium size industrial 12mm (1/2") glue gun, eco heater chamber design for low power consumption, robust & easy to use. Medium output, 3 minute warm-up time & illuminated on/off switch.

<b>Melt rate</b>	1.8kg (4lbs)/hr
<b>Glue size</b>	12mm (1/2") glue stick
<b>Voltage</b>	110-240V
<b>Wattage</b>	30W (250W)
<b>Heater</b>	PTC
<b>Temp Control</b>	Self-regulating heater
<b>Hotmelt gun °C (°F)</b>	195°C (380°F)
<b>Lowmelt gun °C (°F)</b>	130°C (265°F)
<b>Power cable</b>	2m (6 1/2 ft)
<b>Weight</b>	450g (16oz)
<b>Packaging</b>	PET blister (10 per ctn)



tec820-12

Adjustable temperature, heavy duty medium size 12mm (1/2") glue gun. Robust and easy to use, fast recovery, medium output, 2 minute warm up time & illuminated on/off switch.

<b>Melt rate</b>	2.5kg (5 1/2lbs)/hr
<b>Glue size</b>	12mm (1/2") glue stick
<b>Voltage</b>	120V and 230V
<b>Wattage</b>	250W
<b>Heater</b>	Cartridge
<b>Temp Control</b>	User adjustable thermostat
<b>Hotmelt gun °C (°F)</b>	Adjustable 130-195°C (265-380°F)
<b>Lowmelt gun °C (°F)</b>	Covered above
<b>Power cable</b>	3m (10 ft)
<b>Weight</b>	500g (18oz)
<b>Packaging</b>	Plain box (10 per ctn)



tec3200

High output all-electric 43mm (1 3/4") glue gun for Industrial use. Extremely robust with electronic temperature control, automatic standby, plug-in temperature modules & power-on light.

<b>Melt rate</b>	3.5kg (8lbs)/hr
<b>Glue size</b>	43mm (1 3/4") glue cartridge
<b>Voltage</b>	120V and 230V
<b>Wattage</b>	400W
<b>Heater</b>	Cartridge
<b>Temp Control</b>	Electronic plug-in temperature modules
<b>Hotmelt gun °C (°F)</b>	195°C (380°F) fitted, 130°C (265°F) and 215°C (420°F) modules included
<b>Lowmelt gun °C (°F)</b>	Covered above
<b>Power cable</b>	3m (10 ft)
<b>Weight</b>	1.15kg (2 1/2lbs)
<b>Packaging</b>	Plain box ( 5 per ctn)



Bench mount kit with foot pedal and timer control also available

tec6100

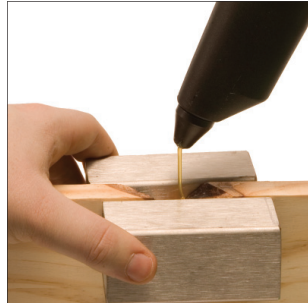
Extremely robust 43mm pneumatic glue gun for Industrial use. Reduces operator fatigue, power-on light, 8 bar (120psi) 14 l/min (0.5 cfm) air supply required.

<b>Melt rate</b>	4.1kg (9lbs)/hr
<b>Glue size</b>	43mm (1 3/4") glue cartridge
<b>Voltage</b>	120V and 230V
<b>Wattage</b>	500W
<b>Heater</b>	Cartridge
<b>Temp Control</b>	Interchangeable thermostat (Page 10)
<b>Hotmelt gun °C (°F)</b>	195°C (380°F), High temp polyamide version 215°C (420°F) also available
<b>Lowmelt gun °C (°F)</b>	130°C (265°F)
<b>Power cable</b>	3m (10 ft)
<b>Weight</b>	1.4kg (3lbs)
<b>Packaging</b>	Plain box (5 per ctn)

# knottec wood repairs



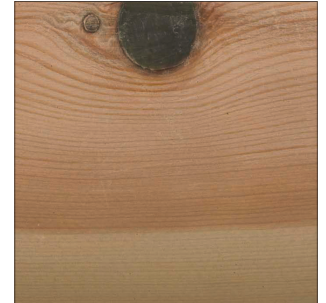
Ensure that the area to be filled is dust-free, then simply fill the knot hole with KNOT-TEC® knot-filling adhesive.



If filling knot holes that go through, or are on the edge of, the work piece, create a 'form' around the void using the heatsink blocks provided.



Wait a few minutes for the KNOT-TEC® knot-filling adhesive to cool, then trim off the excess with the new Mouseplane® flush plane.



The repaired area can now be sanded, painted, or treated in the usual way, achieving a high-quality finish to the restored wood.

## KNOT-TEC® Knot Filling Adhesive

Our unique KNOT-TEC® knot-filling adhesive has been especially formulated for the fast and effective repair of not only knot defects, but also deep scratches and other forms of deep wood damage. Because of its tough characteristics KNOT-TEC® is perfect for repairing wooden doors, window frames, furniture, floors, and much much more.

Available in six different colours in each of two different formulations, KNOT-TEC® may be chosen to blend with the surrounding wood, filling voids and disguising repaired areas prior to varnishing etc. Choose 7713 formulation for general applications where an easy-to-trim and easy-to-sand product is required; choose 7718 formulation for applications where a tougher, hard-wearing product is required e.g. repairing laminate flooring.

Colour	Reference	Reference
Amber	7713-12-AMBER	7718-12-AMBER
Beige	7713-12-BEIGE	7718-12-BEIGE
Black	7713-12-BLACK	7718-12-BLACK
Cola	7713-12-COLA	7718-12-COLA
Cream	7713-12-CREAM	7718-12-CREAM
Oak	7713-12-OAK	7718-12-OAK

Each colour - AMBER, BEIGE, BLACK, COLA, CREAM and OAK - is separately available as either a 10-stick single colour pack, as carton packs (comprising 10 x 10 stick packs), or as bulk packs (comprising 2 x 2.5kg (2½lbs) packs). Each glue stick is 12mm (½") in diameter and 250mm (10") long. The KNOT-TEC® kits themselves come complete with two 12 stick sample packs containing two sticks of each colour in each formulation.

Our KNOT-TEC® system is the most cost-effective wood repair system on the market today.



**Box of 10 x 10 Stick packs  
(Single colour)**



**10 Stick pack  
(Single colour)**



**12 Stick test pack  
(2 of each colour)**



**5kg (11lbs) Bulk packs  
(2 x 2.5kg (2½lbs) bags)  
(Single colour)**

# KNOT-TEC® Tools



## tec305-12

Light industrial 12mm (½") glue gun, lightweight and easy to use, illuminated on/off switch, removable stand, adjustable full hand trigger and replaceable nozzle.

<b>Melt rate</b>	900g (2lbs)/hr
<b>Glue size</b>	12mm (½") glue stick
<b>Voltage</b>	110-240V
<b>Wattage</b>	20W (150W)
<b>Heater</b>	PTC
<b>Temp Control</b>	Self-regulating heater
<b>Hotmelt gun °C (°F)</b>	195°C (380°F)
<b>Lowmelt gun °C (°F)</b>	130°C (265°F)
<b>Power cable</b>	2m (6½ ft)
<b>Weight</b>	250g (9oz)
<b>Packaging</b>	PET blister (10 per ctn)

## tec820-12

Adjustable temperature, heavy duty medium size 12mm (½") glue gun. Robust and easy to use, fast recovery, medium output, 2 minute warm up time & illuminated on/off switch.

<b>Melt rate</b>	2.5kg (5½lbs)/hr
<b>Glue size</b>	12mm (½") glue stick
<b>Voltage</b>	120V and 230V
<b>Wattage</b>	250W
<b>Heater</b>	Cartridge
<b>Temp Control</b>	User adjustable thermostat
<b>Hotmelt gun °C (°F)</b>	Adjustable 130-195°C (265-380°F)
<b>Lowmelt gun °C (°F)</b>	Covered above
<b>Power cable</b>	3m (10 ft)
<b>Weight</b>	500g (18oz)
<b>Packaging</b>	Plain box (10 per ctn)

# KNOT-TEC® Kits

KNOT-TEC® kits are available with either the light industrial **tec305** tool or the professional **tec820** tool.

Each kit comprises the tool, two metal heatsink blocks, a silicone release mat, a Mouseplane®, and two 12 stick mixed colour sample packs (one of each formulation) – all supplied in a handy plastic carry case!



### FAST & EFFECTIVE REPAIR FOR:

- » Windows
- » Doors
- » Furniture
- » Wood floors
- » and much more

## Mouseplane®



Now Included in the KNOT-TEC® kit



# Mouseplane

## Flush Trimming of Glue Lines and Wood



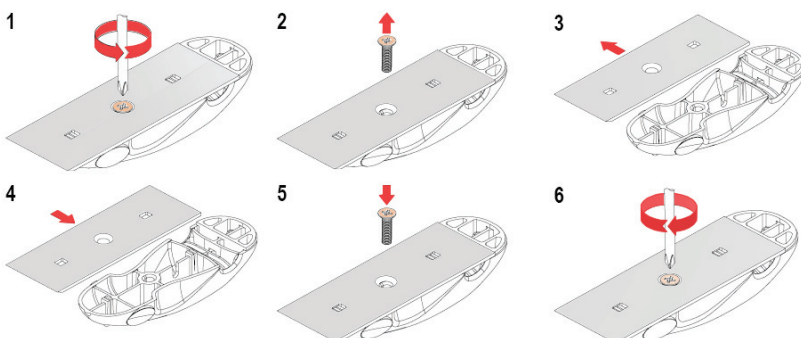
Mouseplane® eliminates tedious, heavy-duty sanding to remove dried glue or to level a wooden surface



Replacement blades available



Changing the Mouseplane® blade is quick and simple, just unscrew the back, discard the old blade and replace with a new one then simply screw back in place



- > Ideal for trimming off dried glue, to level wooden surfaces and for clearing out corners
- > Sits flush against the surface or edge
- > High quality 50mm (2") wide carbon steel blade to maintain sharp edges, can be reground
- > Rounded shape fits comfortably in the hand for smooth application
- > Lightweight, yet robust
- > Comes with blade cover for safety and to protect the edge of the blade when not in use
- > Easy storage compartment for blade cover when using the plane
- > Blade can be unscrewed, and twisted round for added safety when stored



# Mouseplane® & replacement blade



For the flush trimming of glue lines and wood, the Mouseplane® takes away the need for heavy duty sanding to remove dried glue or to level wood surfaces. It is a most useful tool for carpenters, builders, kitchen fitters and cabinet makers. It has the comfort and ease-of-use of a plane, combined with the sharpness and speed of a chisel.

Reference	Description
ADD066-BR1-TEC	Mouseplane for flush trimming of glue lines and wood
SDC005-BR1-TEC	Mouseplane replacement blade

# TEC MAT



Silicone rubber drip mat protects work surface. Size 200mm x 200mm x 1.75mm



Reference	Description
TEC MAT	Silicone rubber drip mat

# Bench mount kit & foot pedal



Please note: Timer unit is sold separately



The tec6100-BMK (Bench Mount Kit) converts your tec6100 & tec7100 to a statically mounted, foot operated glue station. It allows the operator to have both hands free for gluing applications, improving productivity by up to 100%.

Reference	Description	tec 305	tec 805	tec 820	tec 3200	tec 6100
TEC6100-BMK	Bench mount kit & foot pedal	-	-	-	-	■
TEC4000-TK	Timer Control	-	-	-	-	■

# Spring Balancer



The spring balancer is a tool support system with an easily adjustable tension with a maximum cord length of 1.6 metres (5ft). It minimises operator fatigue, increases productivity and prevents tools from being dropped.

Reference	Description	tec 305	tec 805	tec 820	tec 3200	tec 6100
SB/1200	Spring Balancer	■	■	■	■	-
SB/3000	Spring Balancer	-	-	-	-	■

# Metal gun stands



The optional metal tec stands are ideal for when the glue gun is being used repetitively at a work station, making it convenient to return it to a stand after use.

Reference	Type	Description	tec 305	tec 805	tec 820	tec 3200	tec 6100
FFS003-SPARES	Metal gun stand	For craft/light industrial tools, 300 series	■	-	-	-	-
PA3096-SPARES	Metal gun stand	For heavy duty tools, 3000, 6000 & 7000 series (can be wall mounted, 3000 series only)	-	-	-	■	■
MDC009	Metal gun stand	For heavy duty tools 600 & 800 series (can also be wall mounted)	-	■	■	-	-
MDJ021	Extension Nozzle	2mm (0.080") orifice, 19mm (¾") extension	■	■	■	■	■

# Extension Nozzle



Ideal for filling voids under pre-finished flooring



Closing cartons and achieving a tamper-proof seal



Filling voids under pre-finished flooring



Bond decorative attachments and assemble V grooves & templates



Fast and effective repair of knot defects and other forms of damage



Attaching gripper rods for flooring

# power adhesives

Europe's leading shaped hot melt adhesive specialist, offering the largest range of high quality, performance adhesives and hand-held glue applicators.

Over forty years experience has placed us in a unique position to offer industry specialist knowledge on all aspects of commercial gluing operations using thermoplastic adhesives.

Advanced technology at our modern UK production facility enables us to maintain the high level of quality which has become the hallmark of our products. A continuous programme of research and development ensures that we continue to meet the ever changing needs of industry, which includes the tecbond® system.



To reduce our impact on the environment our adhesives are often formulated using raw materials that have been harvested from sustainable managed forests.

Our packaging is recyclable and where possible made from recycled materials.

## Power Adhesives Limited

1 Lords Way, Basildon, Essex, SS13 1TN ENGLAND

Tel: +44 (0)1268 885800 Fax: +44 (0)1268 885810  
[sales@poweradhesives.com](mailto:sales@poweradhesives.com) [www.poweradhesives.com](http://www.poweradhesives.com)

12 months warranty on all equipment



Over 90% of our products made in Britain

